

**OUTSOURCE YOUR WAPRING NEEDS
FOR FLAWLESS, COST-EFFECTIVE RESULTS.**



COMMISSION SECTIONAL WARPING FOR
TECHNICALLY DEMANDING PROJECTS

SIMPLIFY LOGISTICS WITH WARPTEK'S SEAMLESS PROCESS.

Think of Warptek as your personal warping department. We analyze each order's specifications and develop a strategy to produce perfect warps. From managing inventory to calculating yarn quantities, optimizing production strategies, and arranging and supporting shipments, Warptek handles every detail in the warping process so that you can concentrate on your core business — and increase your bottom line. We take care of logistical details so that you can focus on growing your company and delighting your clients.



AVOID FRUSTRATION AND ENSURE HIGH QUALITY.



Technically demanding applications call for technically skilled machine operators and highly knowledgeable supervisors who understand the subtleties of precision warping. Training new hires or retraining existing employees in new applications proves time-consuming — how long will it take until they produce flawless products? And can you afford for them to learn new processes on expensive fibers?

Instead, Warptek's highly skilled staff follows strict operating guidelines, signing off on each step of the process as it's completed, to ensure your warp matches our exacting quality standards. Because of the wide variety of applications we perform, our staff is flexible and knowledgeable about the many procedures needed to produce flawless warps. But that's not enough. We require completed protocol checklists throughout the process to ensure excellence. Plus, our staff receives continuous training on the newest technologies and applications so that we can best serve your needs.

SAVE MONEY BY OUTSOURCING YOUR WARPING.

Sectional warping machines require extensive resources to operate. From financing the machine to allocating space in your facility to absorbing energy costs, warping is an expensive endeavor. Factor in the labor cost of technical expertise and suddenly, you're embroiled in a pricey enterprise.

Rather than investing capital in machines and labor, you can depend on an experienced, reliable, technically savvy team to produce high-quality warps for your needs — without adding to your operating budget.

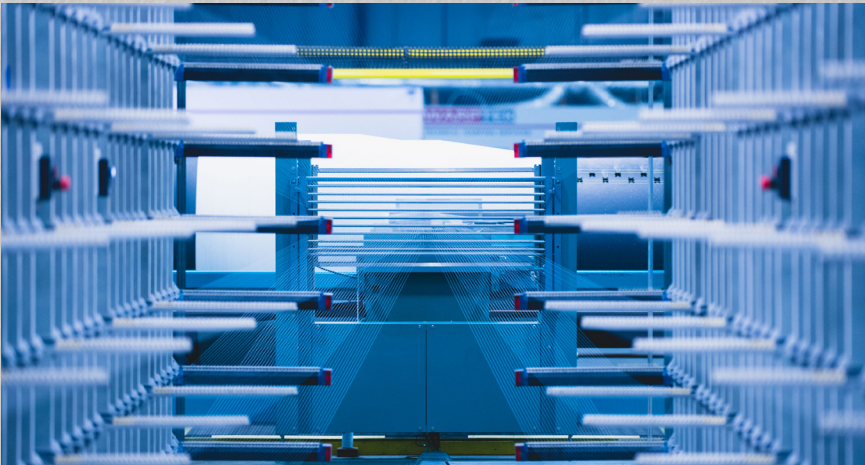


OUR FLEXIBILITY MEETS YOUR NEEDS.

Sectional warping machines are highly specialized, working with a limited range of materials. However, Warptek offers sectional warping for a wide range of applications. From industrial applications to consumer, automotive, architectural, and composites/ballistics, our commission warping operation provides flexibility to process the styles you need. We work with nearly all fibers, tensile strengths, and levels of thickness to ensure high quality warps that meet your unique requirements. In fact, our team often creates solutions for clients' challenging applications. If you need a special, complex warp, we'll devise a plan to meet your challenge!

Our typical warps fall into the following technical specifications:

Maximum Warp Width:	150" (3800 mm)
Maximum Section Width:	27.5" (700 mm)
Maximum Beaming Tensions	3,307 lb (15,000 N)
Minimum Beaming Tensions	44 lb (200 N)
Maximum Creel Positions	912
Maximum Flange Diameter50" (1,250 mm)
Maximum Beam Barrel Length	174" (4,420 mm)



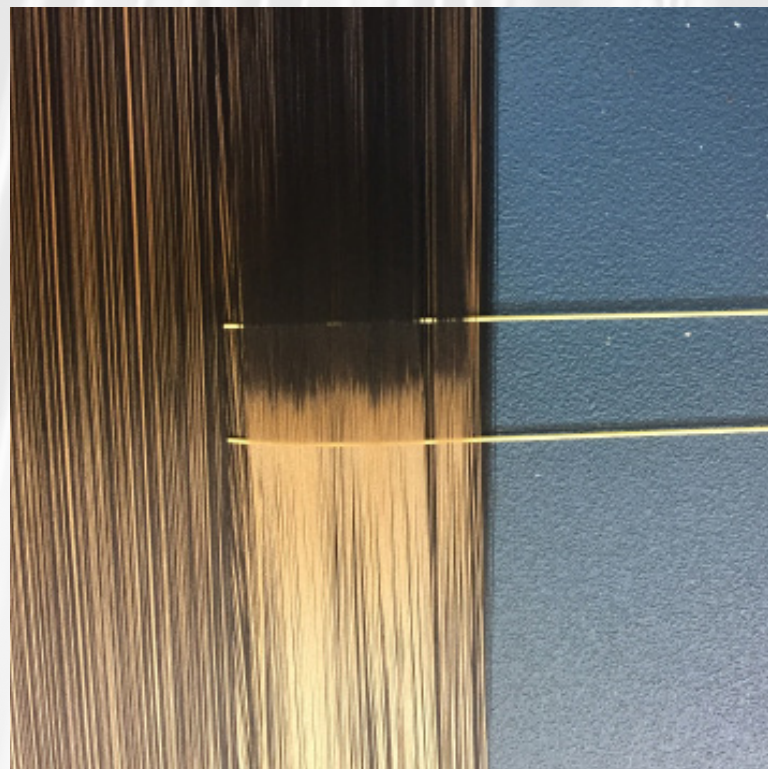
CHALLENGING APPLICATION? WE PROVIDE THE SOLUTION.

Yarn: We process yarn counts from 30 Denier up to 1000 Denier 7 Ply.

Products range from polyester yarns, polyamide, PVC coated fiberglass and polyester, fiberglass, ceramic, basalt, aramids, spandex, PTFE, monofilaments up to 850 μ (0.85 mm) and more. No twist, high twist, texturized, and coated — we process a wide range of options.

Additionally, our team's experience includes creeling and running patterned warps. Clients for these applications range from weavers for upholstery fabrics, woven labels, automotive applications, and more.

Do you have a special project falling outside our normal perimeters? Ask us — we pride ourselves on creating solutions for unique projects.



ENLIST THE EXPERTS TO ENSURE HIGH QUALITY RESULTS.



PETER ADOLF

Founder and President

A textile veteran of more than 30 years, Peter began his career in the technical department of Benninger in Switzerland, a leading manufacturer of weaving prep equipment. He traveled the world, supporting Benninger's clients, and eventually led Benninger's North American operations. After realizing the need for a high-quality commission warping operation in the United States, he founded Warptek in 2002.



PAUL FEATHERSTONE

Sales/Customer Relations

Paul brings over 40 years of experience in the textile industry, with a strong focus on weaving. Throughout his career, he has held key roles with leading OEM Machinery Manufacturers, including Picanol NV and American Dornier, where he served as After-Sales Service Manager. Paul also spent more than a decade in the woven automotive sector with Sage Automotive Interiors, contributing his deep industry knowledge and technical expertise.



MARK GILMORE

Production Manager

A graduate of North Carolina State University's College of Textiles, Mark brings over 40 years of experience in textile manufacturing and the automotive supply industry. He has held leadership roles in fabric production and yarn preparation, with expertise in weaving technologies such as shuttle, air-jet, rapier, and water jet systems. Mark is also well-versed in lean manufacturing and Total Quality Control, including Kaizen principles for continuous improvement.

FOR MORE INFORMATION
OR TO DISCUSS A PROJECT,
CONTACT US:

275 TUCAPAU ROAD | WELLFORD | SC | 29385
PHONE: 864.439.3456 | FAX: 864.439.7890

WWW.WARPTEK.NET

